

Taranaki Basin

Taranaki Basin covers an area of about 330,000 km² and is currently the only producing basin in New Zealand. It has developed over 20 oil and gas condensate fields.

Contact us

✉ resourceinvestment@mbie.govt.nz

🌐 nzpam.govt.nz



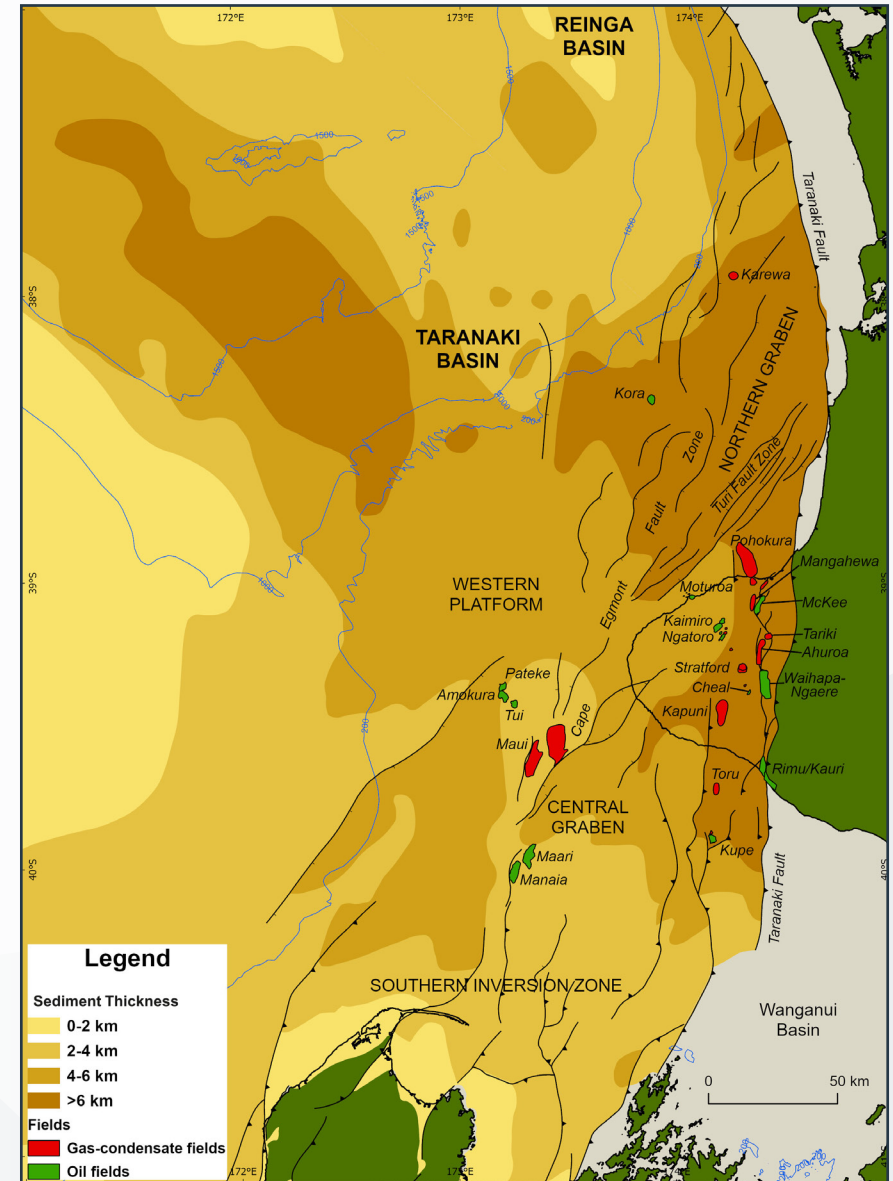
Connect with us
to explore more



Over 400 onshore and offshore exploration and production wells have been drilled in Taranaki to date. The basin remains under-explored compared to many comparable failed rift complex basins of its size and there remains considerable potential for further discoveries.



Content and image based on:
nzpam.govt.nz/nz-industry/nz-petroleum/resource-potential

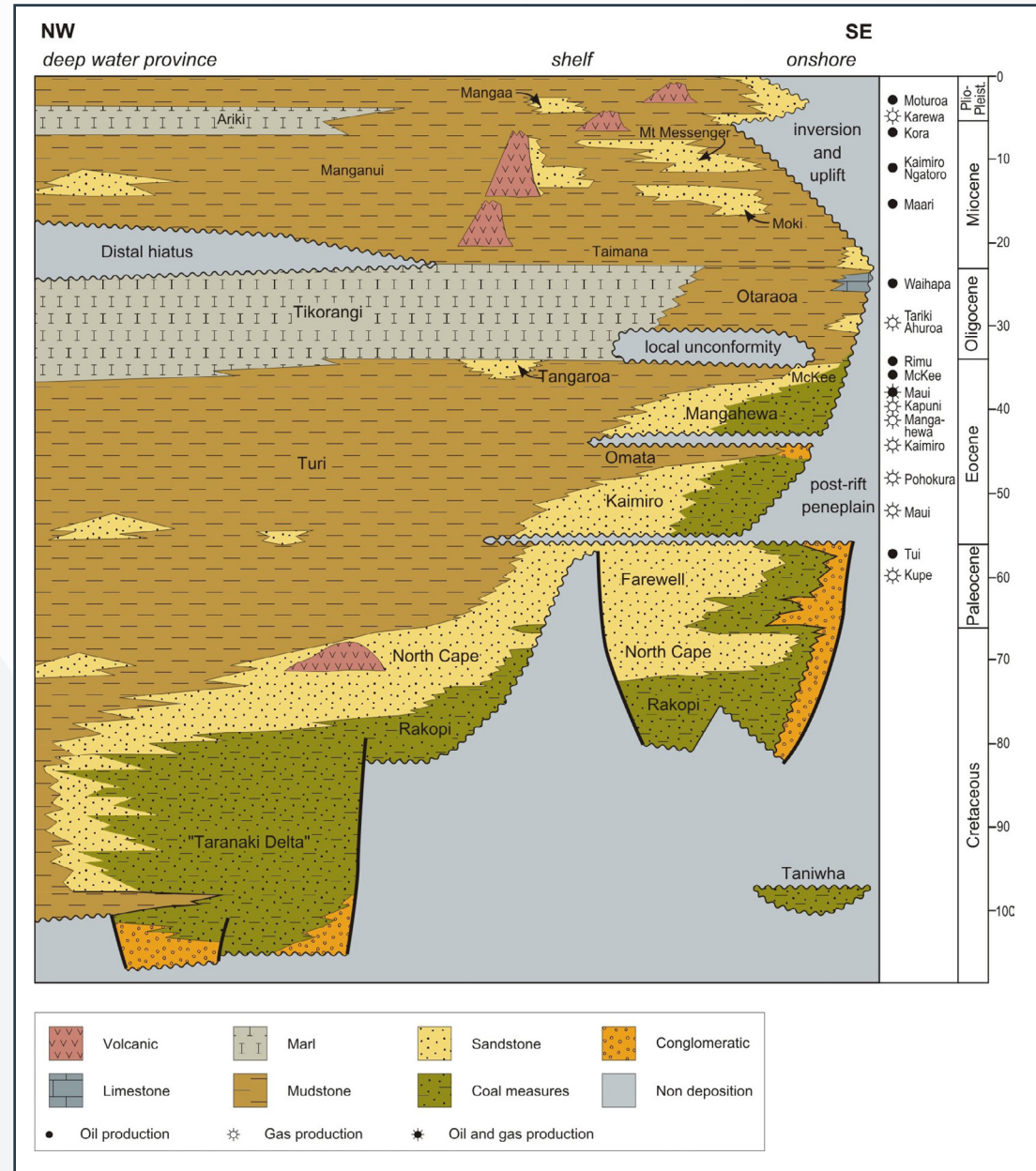


Geology

Jurassic Murihiku marine rocks and coal measures may be basement or earliest basin-fill. Early Cretaceous to Paleogene intraplate rift basin, with marine transgression and onlap. Large Cretaceous delta beyond the shelf edge. Back-arc subsidence and some compression in Neogene. Basin-fill up to 9,000 m.

Source Rocks

Jurassic, mid-to Late Cretaceous and Paleogene coaly rocks, Cretaceous and Paleocene marine shales.



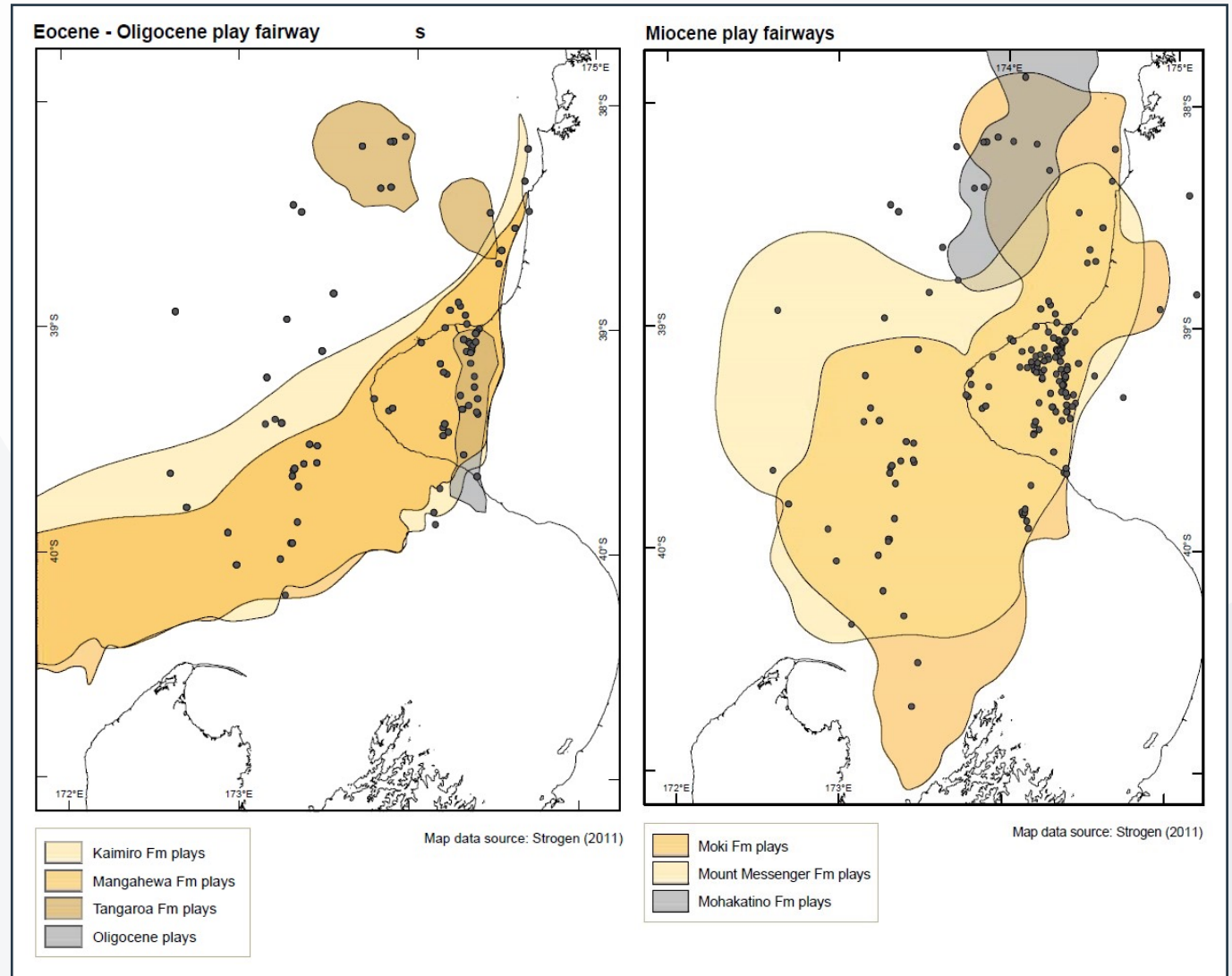
Content and image from:
nzpam.govt.nz/nz-industry/nz-petroleum/resource-potential

Reservoir Rocks

Late Cretaceous to Eocene terrestrial, paralic and near-shore sandstones, Late Cretaceous to Pliocene turbidites, fractured Oligocene limestone, Miocene volcanoclastics, Pliocene shelf sand.

Taranaki Basin Plays

Taranaki Basin is characterised by its variety of play types, mostly structural in nature. The majority of wildcats to date have targeted anticlinal or four-way dip closures. The mechanisms that produced these features can be radically different due to the basin's complex tectonic history. A Miocene compressional phase following Late Cretaceous rifting produced most of the structures currently trapping hydrocarbons at several stratigraphic levels with the multiple tectonic events leading to accumulations of oil above gas. Other play concepts are associated with half-graben fill, submarine fan systems, buried volcanic edifices and diagenetic traps.



Content and image from:
nzpam.govt.nz/nz-industry/nz-petroleum/resource-potential

Taranaki Basin Opportunities

Onshore has shallow to medium depth oil opportunities, over-thrust hosted oil and deeper tight gas developments. Offshore shelfal areas are prospective for both oil and gas and have good exploration potential. The deep water has had very little work done.

Over 560 million barrels of oil and 8 trillion cubic feet of gas have been produced to date. There is a network of infrastructure to tie into. Farm-ins and joint ventures are available.

Contact us

✉ resourceinvestment@mbie.govt.nz

🌐 nzpam.govt.nz



Connect with us
to explore more

